



Quality Radiation Shielding Products

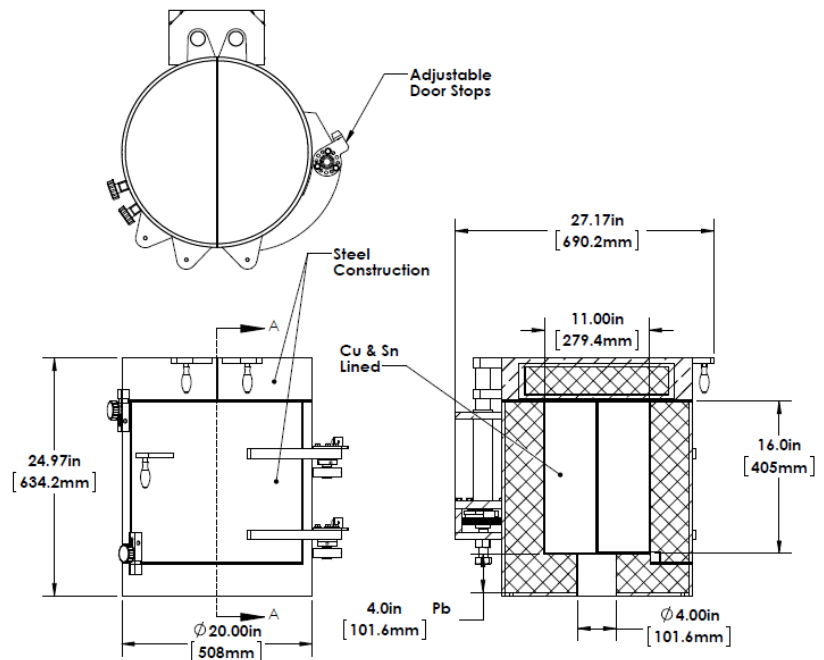
Kolga Model A360 Front Opening, Split-Top 10 cm High Performance Low Background Lead Shield for HPGE Detectors

Description

The Kolga Model A360 is a 10 cm (4 inch) high performance copper/tin-lined lead shield for germanium detectors (HPGE). The A360 shield is made from certified DOE Run virgin low background lead. The graded liner is designed to suppress lead x-rays and consists of a 1 mm (0.040 in.) tin layer covered by a 1.5 mm (0.06 in.) oxygen-free copper layer. The front opening/ split top is a full 10 cm (4 inch) lead shield to provide the best possible shielding and most convenience for sample loading. The shield includes a rigid stand with adjustable feet to maintain the unit level while allowing easy access to install or remove the detector. The A360 exterior and stand are coated with durable epoxy paint. All copper components are coated with a clear polyurethane sealer to prevent corrosion.

Specifications

- Overall: Height 634.2 mm (24.97 in.)
Diameter 508 mm (20 in.)
- Cavity: Diameter 279.4 mm (11 in.)
Depth 405 mm (16 in.)
- Outer Jacket:
9.5 mm (3/8 in.) thick low carbon steel
- Shield: 10 cm (4 in.) thick certified low background lead
- Graded Lining: 1 mm (0.04 in.) tin and
1.5 mm (0.06 in.) oxygen free copper
- Weight: 1116 Kg (2455 lbs.)
- Finish: Light Gray Epoxy Paint
- All Lead fully encapsulated in metal.



Kolga, LLC

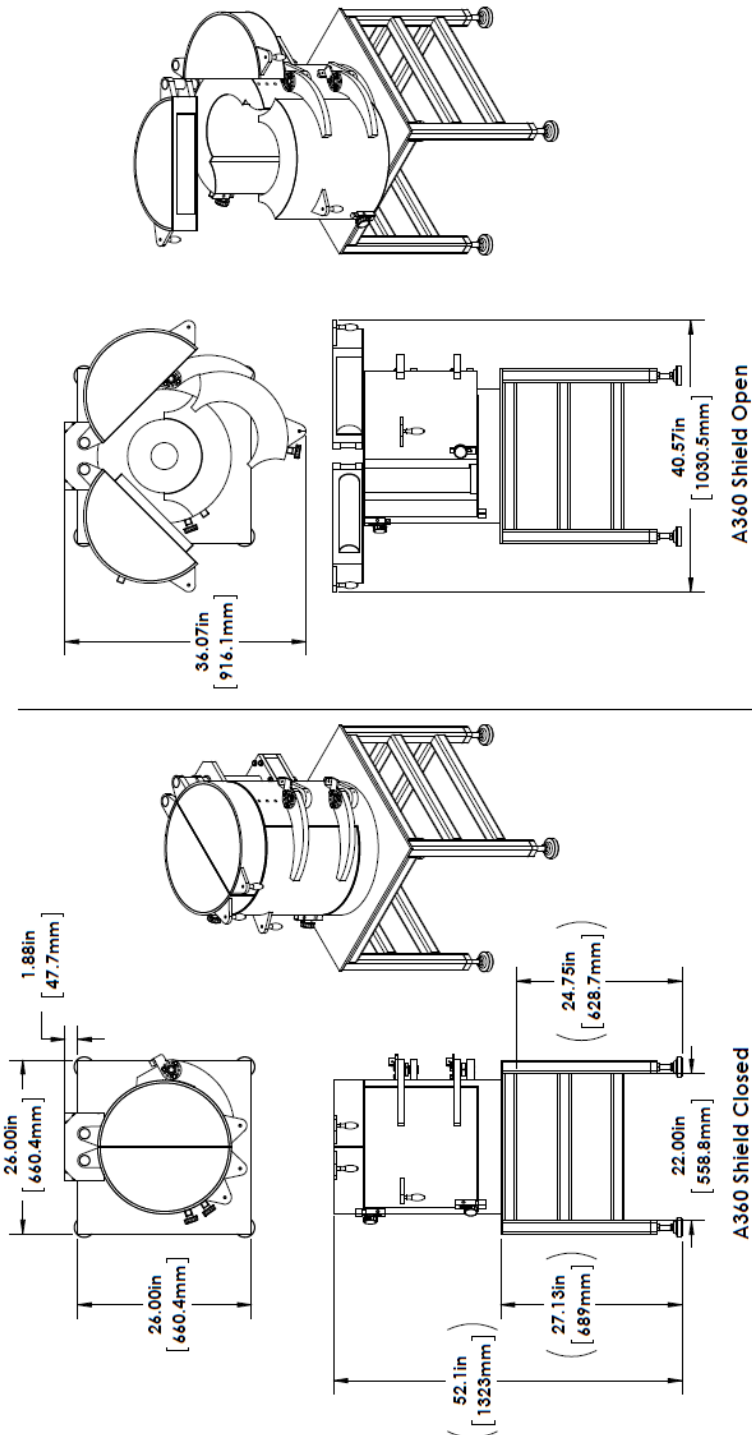
Quality Lead Shield Products
65 Lancaster Drive
Beacon Falls, CT 06403

Tel: 203-729-6800 ext.12
sales@kolgashield.com
www.kolgashield.com
9/05/2013 v05



Quality Radiation Shielding Products

Kolga Model A360 Front Opening, Split-Top High Performance Low Background Lead Shield



Kolga, LLC

Quality Lead Shield Products

65 Lancaster Drive
Beacon Falls, CT 06403

Tel: 203-729-6800 ext.12

Sales@kolgashield.com

www.kolgashield.com