

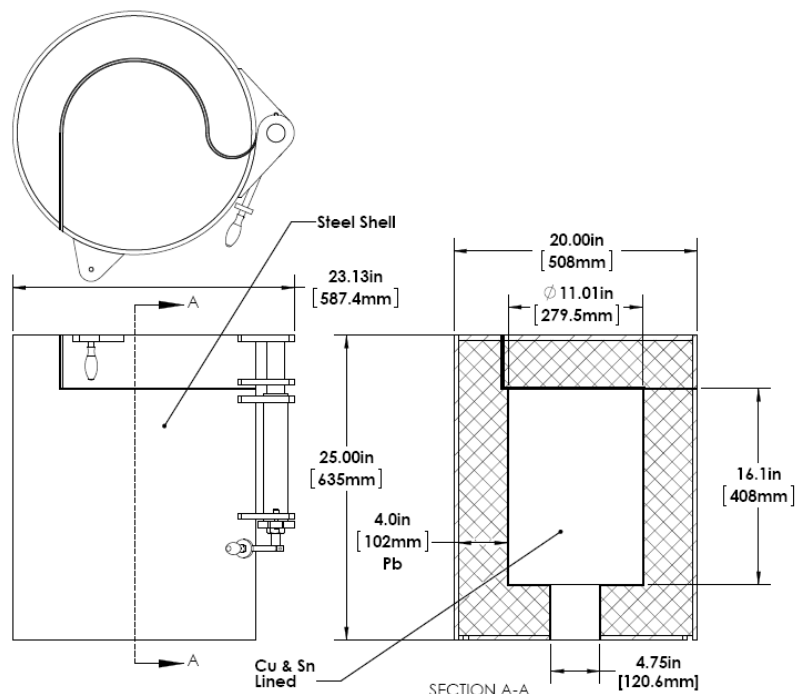
Kolga Model A340 Top Opening 10 cm High Performance Low Background Lead Shield for HPGE Detectors

Description

The Kolga Model A340 is a 10 cm (4 in) high performance copper/tin lined lead shield for germanium detectors (HPGE). The A340 shield is made from certified DOE Run virgin low background lead. The graded liner is designed for the suppression lead x-rays and consists of a tin layer of 1 mm (0.040 in.) covered by a oxygen free copper layer of 1.6 mm (0.062 in.). The Top Opening components are stepped in a way to provide the best possible shielding. The top has a built in sliding lock to help facilitate safe operation. The shield includes a rigid stand with adjustable feet to maintain the unit level while allowing easy access to install or remove the detector. The A340 exterior and stand is coated with durable epoxy paint while all copper components are coated with a clear polyurethane

Specifications

- Overall: Height 635 mm (25.00 in.)
Width 508 mm (20.0 in.)
- Cavity: Diameter 279 mm (11 in.)
Depth 406 mm (16 in.)
- Outer Jacket:
9.5 mm (3/8 in.) thick low carbon steel
- Shield: 100 mm (4 in.) thick certified low background lead
- Graded Lining: 1 mm (0.04 in.) tin and 1.6 mm (0.062 in.) oxygen free copper
- Weight: 1090 kg (2400 lbs.)
- Finish: Light Gray Epoxy Paint
- All Lead fully encapsulated in metal.



Kolga, LLC

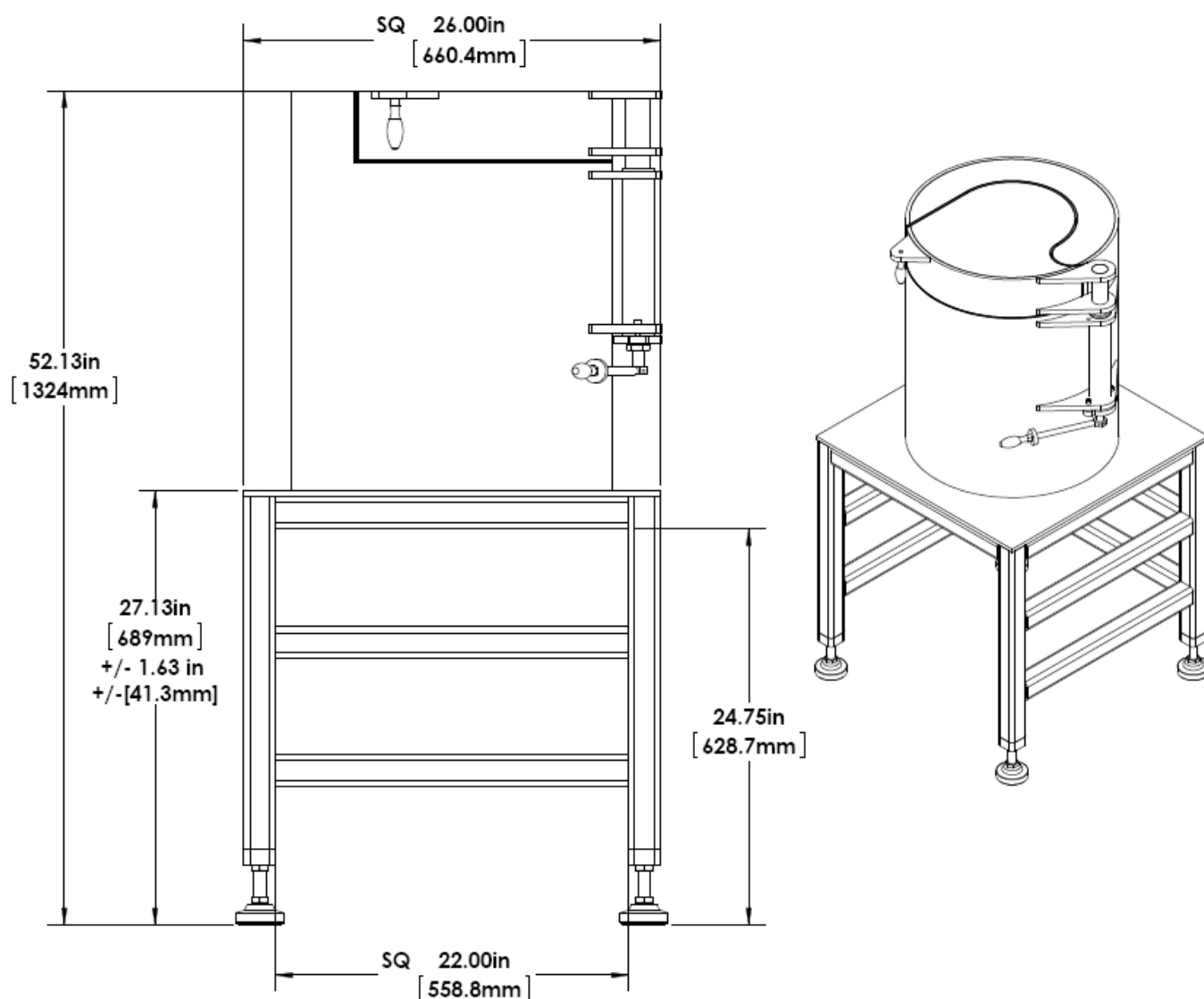
Quality Lead Shield Products
65 Lancaster Drive
Beacon Falls, CT 06403

Tel: 203-729-6800 ext.11
sales@kolgashield.com
www.kolgashield.com
9/05/2013 v05



Quality Radiation Shielding Products

Kolga Model A340 Mounted on 26 in Table



Kolga, LLC

Quality Lead Shield Products

65 Lancaster Drive
Beacon Falls, CT 06403

Tel: 203-729-6800 ext.11

sales@kolgashield.com

www.kolgashield.com